



TRANSFORMATIVE DEVELOPMENT CAPACITIES

Data for the Africa We Want: A Focus on Health

Presented at AfricaGIS 2017, Addis Ababa

November 2017

Patrick Ooro
Director

DaySeven Technology (Pty) Ltd



GE Digital
Alliance Partner



Contents

- 1. DaySeven Technology Overview**
- 2. Proposed Solution:**
 - 2.1 Current Context**
 - 2.2 Solution Eco-System**
 - 2.3 Benefits**
 - 2.4 Solution Demonstration**



TRANSFORMATIVE DEVELOPMENT CAPACITIES



1. DaySeven Technology Overview

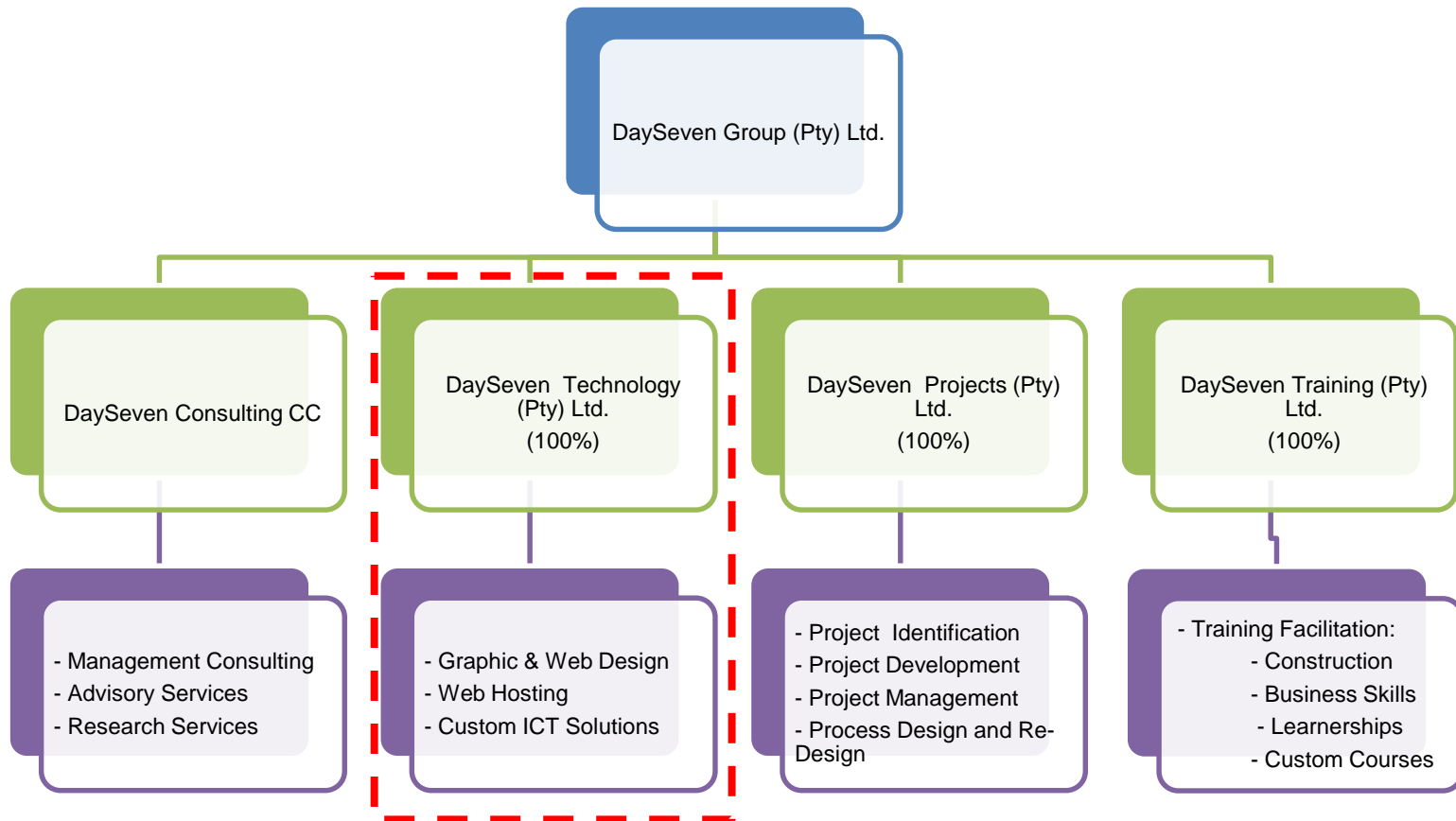
1.1 Company Overview

Background

Part of DaySeven Group (Pty) Ltd (Founded in 2008 as DaySeven Consulting)

Ownership

70% Black Youth Female Owned



1.2 Our Services



- Fast and Reliable servers with regular backups

- Wide range of TLDs to suit all our clients' requirements



- In-House Innovative Graphic and Web Design team



- Secure, Encrypted Servers
- Multiple site redundancy



- Custom Software and Application Development
- Integrated Consulting & Customised ICT Solutions





2. Proposed Solution

➤ **Need to Provide Basic Healthcare Services:**

- Basic human right
- Social (Health, Human Dignity) and Economic benefits

➤ **Lack of Reliable Data :**

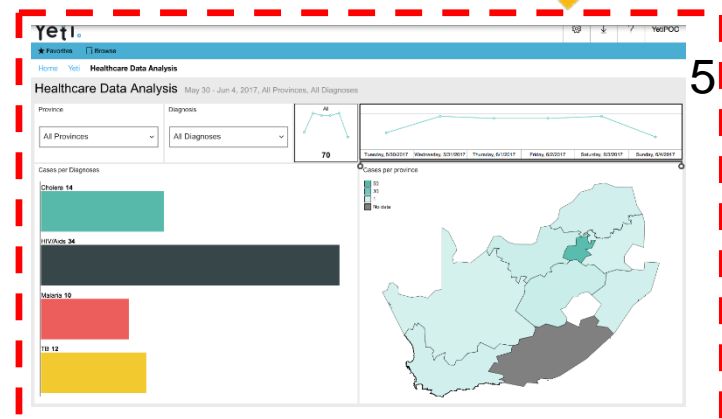
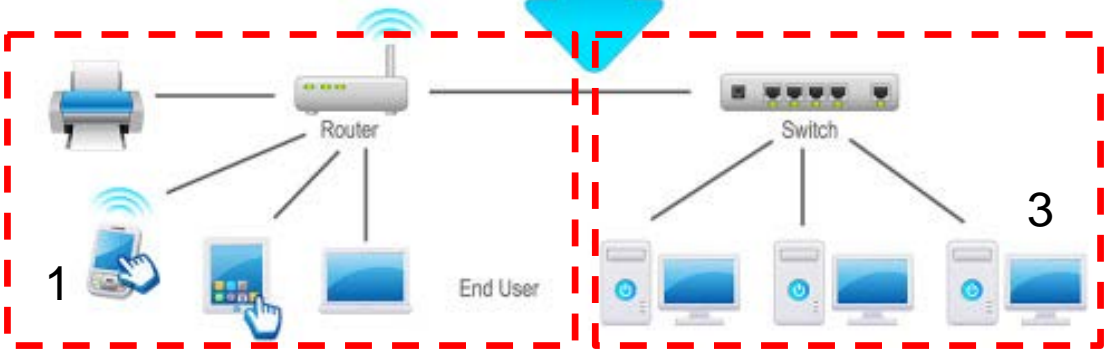
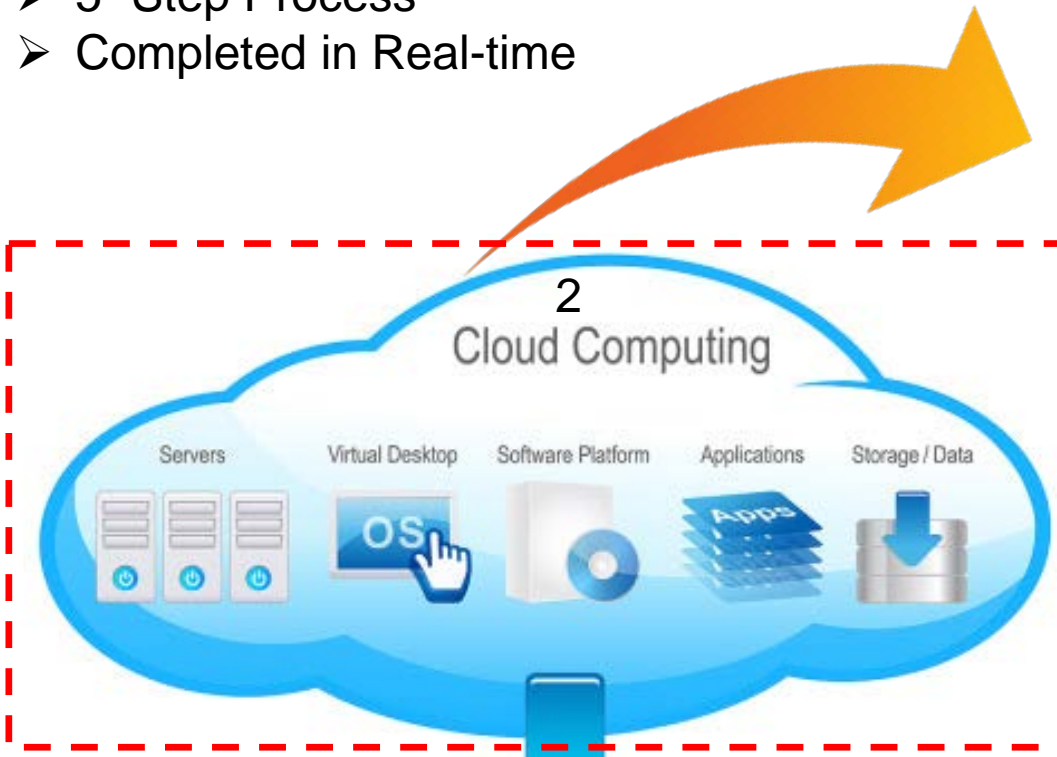
- Absence of a unified data collection approach at grassroots level:
 - Some data items are common e.g. Name, Age, Gender etc.
- Current 2-Step data capturing leads to delays and possible data gaps:
 - Step 1: Captured on paper forms
 - Step 2: Paper forms captured electronically in some cases

➤ **Delayed Response to Disease Outbreaks :**

- Inefficiency of current data capturing, analytics and reporting:
 - Data capturing is not real-time
 - Analysis of the captured data is not real-time
 - Reporting is not always driven by “Red Flags”

2.2 Solution Eco-System

- 5- Step Process
- Completed in Real-time



➤ **Flexible:**

- Data Capture forms can have unlimited and customised fields to suit usage
- Works on any smartphone and tablet device (Android, iOS)
- Forms and data capture function even without network (Remote Areas)

➤ **Scalable:**

- Number of users is unlimited
- Number of forms is unlimited – Solution can be deployed for multiple purposes within the same organisation

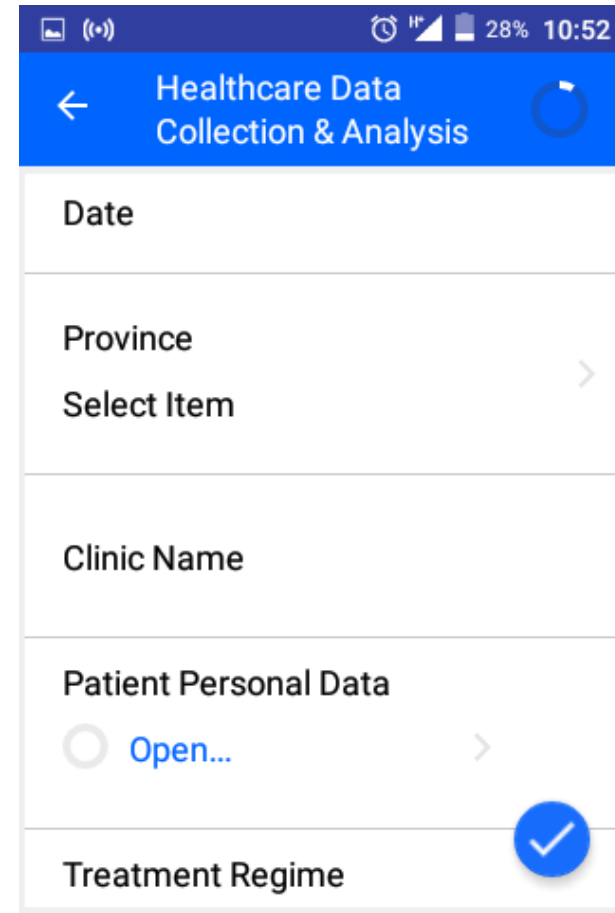
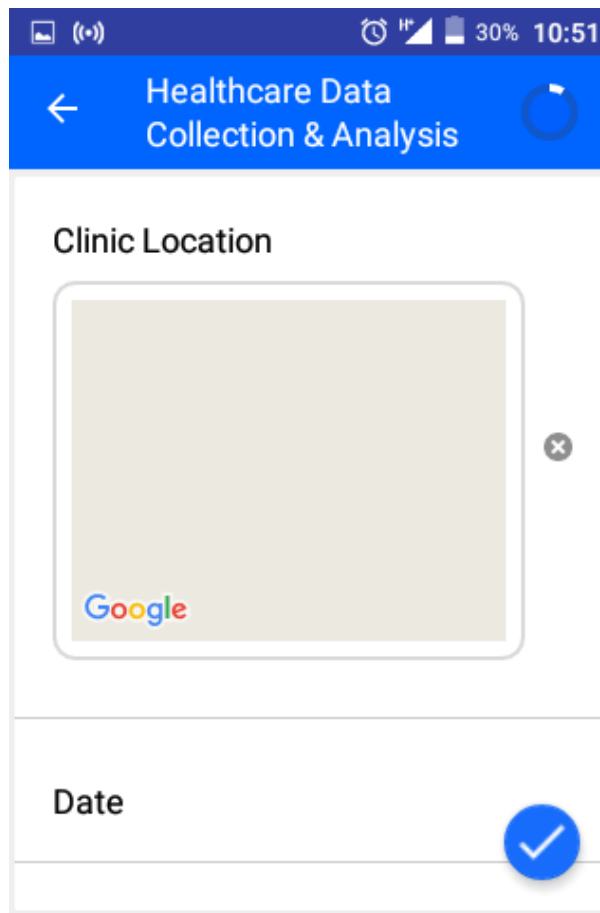
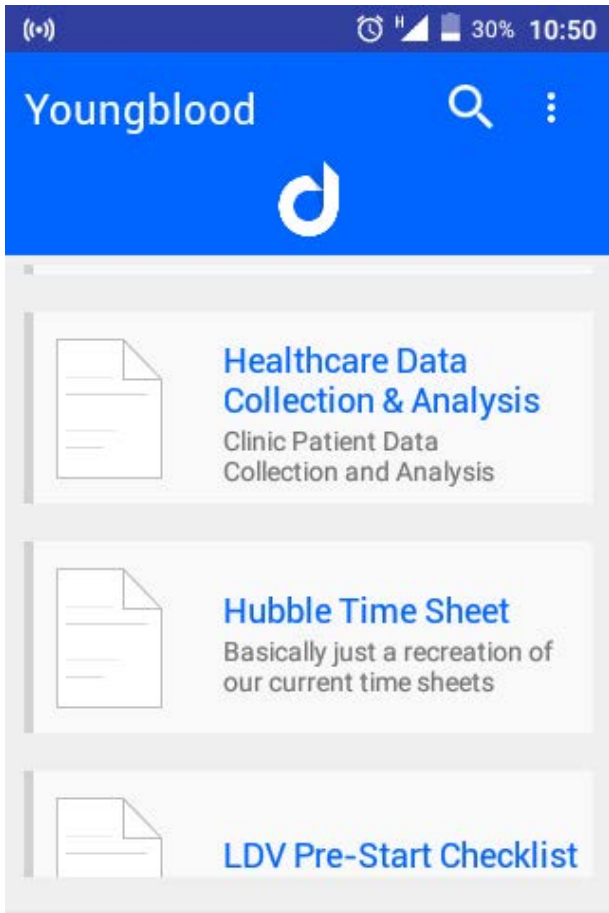
➤ **Secure:**

- Data is stored on encrypted servers

➤ **Real Time Reporting and Analytics:**

- Ability to analyse captured data while field workers are out at site and provide feedback for immediate problem resolution – Critical in outbreak situations

2.4 Solution Demonstration – Data Capture



2.4.1 Dashboard Overview

<http://yeti.young-blood.co.za/reports/mobilereport/Yeti/Healthcare%20Data%20Analysis?rs:Embed=true>

Healthcare Data Analysis Nov 15 - 21, 2017, All Provinces, All Diagnoses

Province: All Provinces | Diagnosis: All Diagnoses

85

Cases per Diagnoses

Diagnosis	Cases
Cholera	15
HIV/Aids	47
Malaria	13
TB	10

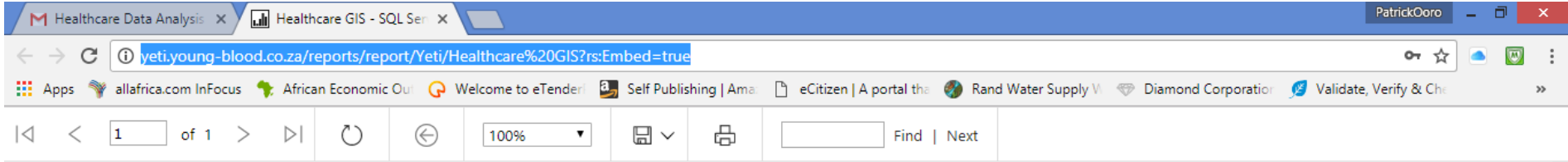
Cases per province

Legend: 60, 30, 2

Timeline: Wed, 11/15/2017 | Thu, 11/16/2017 | Fri, 11/17/2017 | Sat, 11/18/2017 | Sun, 11/19/2017 | Mon, 11/20/2017 | Tue, 11/21/2017

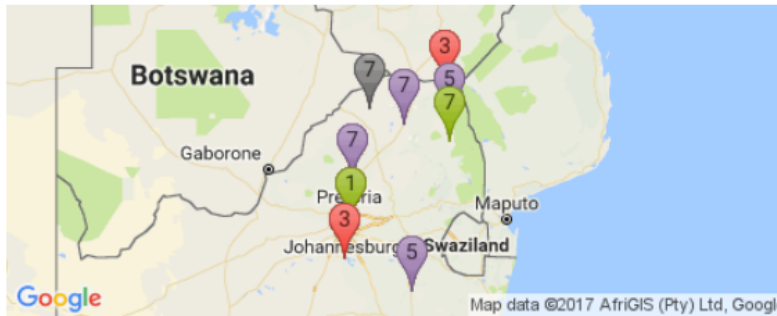
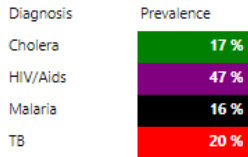
2.4.2 Data Analysis Report

<http://yeti.young-blood.co.za/reports/report/Yeti/Healthcare%20GIS?rs:Embed=true>



Healthcare Data Analysis

Diagnosis Breakdown



Clinic Breakdown

	Cholera	HIV/Aids	Malaria	TB
Bela Bela Hospital	7 %	8 %	8 %	19 %
Botlokwa Hospital		8 %	8 %	
Fountain of Hope Wellness Clinic	57 %	61 %	62 %	38 %
Mutale Community Health Centre		3 %	15 %	31 %
Muwaweni Clinic	7 %	5 %		6 %
My Darling Clinic		5 %	8 %	
Naboomspruit Clinic	7 %	5 %		





END

Data for the Africa We Want: A Focus on Health

Contact Us:

1st Floor

292 Surrey Avenue

Randburg, Johannesburg

T: +27 (0) 81 247 5246

E: info@dayseven.co.za



TRANSFORMATIVE DEVELOPMENT CAPACITIES